

Livewell Southwest – Plymouth Community Dental Services

Job Description:

Specialist Trainee in Special Care Dentistry

Salary scale	Salary will be in accordance with the NHS Specialty Trainee Pay Circular (Medical and Dental), pro rata for part-time.
Hours	Full time 40 hours or LTFT (with a minimum of 60%)
Location	Plymouth Community Dental Services. Based at the Greenbank Dental Clinic, Plymouth, with occasional clinics at Scott Dental Clinic, Plymouth. Our general anaesthetics lists are held in the Freedom Unit at Derriford Hospital, Plymouth.
Reporting to	Service Manager/Clinical Lead/Educational Supervisor.

Purpose of the Job:

This is a specialty training post for a fixed term of 3-4 years (full-time), designed to meet the requirements of the South West Deanery for specialist training and complying with the requirements of the Postgraduate Dental Dean and recommendations of the SAC.

The post holder will be required to actively contribute to an Educational Agreement and meet the agreed learning objectives. They will be eligible for the award of a Certificate of Completion of Specialty Training in Special Care Dentistry (CCST) leading to registration with the General Dental Council as a Specialist in Special Care Dentistry, subject to satisfactory progress and completion of training programme.

The appointment will commence in September 2026 at NHS Specialty Trainee grade.

The training post will be based predominantly in primary care, in a multi-disciplinary specialist led centre (special care dentistry, oral surgery, paediatric dentistry) under the supervision of:

- Dr Louise Hopper, Specialist in Special Care Dentistry and Educational Supervisor

- Additional Specialist in Special Care Dentistry due to be appointed imminently, Clinical Supervisor
- Mr Simon Heywood, Specialist in Oral Surgery, Clinical Supervisor
- Mrs Rachel Parkes, Specialist in Paediatric Dentistry, Clinical Supervisor
- Ms Donna McCormick, Tier 2 oral surgery provider and sedation lead

Additional placements will also be arranged at other specialist centres and teaching hospitals in line with trainee educational needs and educational agreement. This has previously included Dental Department (Maxillofacial, Orthodontics and Restorative Dentistry) at Derriford Hospital, Exeter Community Dental Service, Bristol Dental Hospital for Special Care Dentistry, Oral Medicine, and Restorative Dentistry, Kings College London for tertiary Special Care Dentistry and the Royal Hospital for Neurodisability.

Plymouth Community Dental Services provides dental care services to all the patient groups described in the Special Care Dentistry Training Curriculum. Treatment modalities include non-pharmacological behaviour management techniques, acupuncture, conscious sedation and treatment with general anaesthetic. There will be opportunity to work within a supportive senior clinical team, where Trainees can provide treatment in our community special care clinics and hospital general anaesthetic lists, as well as domiciliary care. We work alongside our oral surgery and paediatric dentistry colleagues and have strong links to local community-based teams within Livewell Southwest and those based in secondary care. We work closely with the primary care based domiciliary providers.

Attendance at national and international conferences, regional meetings and study days with fellow Specialist Trainees will be supported in accordance with Deanery guidance. The successful applicant will have plenty of opportunities to develop professional generic skills in clinical governance, leadership and reflection and they will be encouraged to undertake postgraduate qualifications and/or research to support their training programme. Support will be given in preparation for the tricollegiate examination in Special Care Dentistry.

The successful applicant will be well supported by our administrative team. Although there is no dedicated trainee office space, trainees will be provided with a laptop, and there are functional hot desk spaces within the building suitable for study and meetings. IT is supported via Livewell Southwest, and the service utilises Dentally dental software platform.

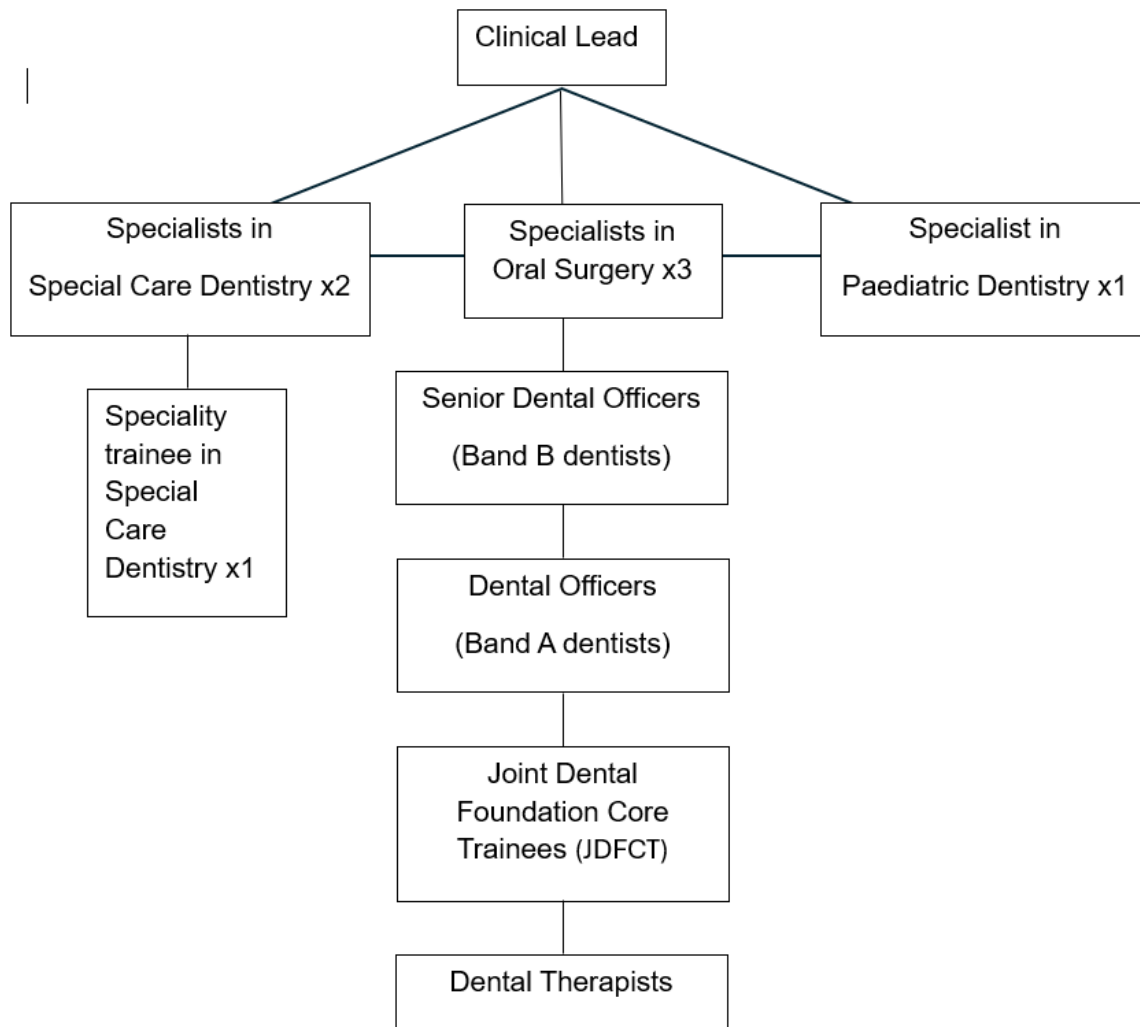
Plymouth Community Dental Services supports the provision of special care dentistry across the city and surrounding area, in a high demand area. Across Devon, there are also specialist services based in Exeter and Torbay. The scale of operation brings opportunities to establish and develop innovative new services to better meet the needs of our patients, and our organisation promotes a culture of civility and respect across our teams.

We are fortunate to be based in the beautiful Southwest of England with spectacular moors and coastlines on our doorstep, with the clinic a 5 minute walk from our historic sea front. There are mainline rail links from Plymouth, along with regular coach and bus

services. Bristol airport is linked via a coach service, and there are daily ferry crossings to France from the city centre. The cost of living is extremely reasonable in this part of the country.

KEY WORKING RELATIONSHIPS:

- Service users
- Service Manager
- Clinical Lead
- Specialists in Special Care Dentistry (2), Oral Surgery (3) and Paediatric Dentistry (1)
- Senior Dental Officers and Dental Officers
- Joint Dental Foundation Core Trainees (JDFCT) (surgery and community dentistry rotations)
- Dental Therapists
- Senior Dental Nurses (sedation trained) and Dental Nurses
- Administrators and Receptionists
- Additional teams working with the patient group including learning disabilities team, speech and language therapists, oncology, haematology, advocacy services.



MAIN DUTIES AND RESPONSIBILITIES

Patient care

- Provide high quality, patient-centred oral health care for adults with additional needs in a variety of settings, including clinics, hospitals and domiciliary settings; being adaptable to the different patient needs and working environments. This will include treatment of people with complex medical needs, learning disabilities, neurodiversity, challenging behaviour, severe mental illness, mobility problems, sensory disabilities, frail older people and other adults who meet our acceptance criteria, such as dental screening for oncology patients.
- Work collaboratively with Dentists, Dental Therapists, and Dental Nurses.
- Liaise and develop close links with oral health promotion colleagues, hospital consultants, other health and social care colleagues in providing care for people with additional needs.
- To attend the MCN in Special Care Dentistry (where timetabling allows), to network and collaborate with other Special Care and Community Dental Services in the South West.
- Clinical work will predominantly be in Plymouth, but there is an expectation to arrange placements in other locations in order to gain maximum benefit of the training programme. The post holder will be required to travel independently by car or other means.
- This post will be based in Plymouth for the purpose of claiming travel expenses and other allowances. Travel expenses will be paid in line with the Salaried Dentist contract.
- Management of patients requiring advanced behavioural management techniques, conscious sedation and general anaesthesia, as appropriate. This will include general anaesthetic lists at University Hospital Plymouth (Derriford Hospital). This will include our special care dental list, along with the learning disability diagnostics list and additional lists from other specialities where dental input is requested.
- Obtain informed consent and actively participate/lead in best interests decisions for patient treatment in accordance with the Mental Capacity Act 2005 and local policies.
- Be responsible for data collection and reports as required for the Community Dental Service.
- Keep comprehensive, contemporaneous clinical records in the computerised notes and other clinical software systems. The post holder has responsibility for the timely and accurate creation, maintenance and storage of records in accordance with local policy,

including email documents, in line with the General Data Protection Act (2018), The Freedom of Information Act and any other relevant statutory requirements.

- Comply with local Infection Control Policies and always conduct themselves in such a manner as to minimise the risk of healthcare associated infection.
- The post holder will be expected to participate in clinical governance activities, including peer review, audit and clinical supervision to support the provision of high quality services.

Education

- Attend and actively contribute to an educational agreement with the Educational Supervisor to facilitate learning needs and objective setting. To meet those agreed learning objectives and other training and educational activities, as required to fulfil the curriculum and complete the training programme in Special Care Dentistry.
- Ensure that the modules of the training curriculum described by the SAC are covered in planned protected time. Support and mentoring from a range of clinicians will always be available for learning and reflection.
- To take an active role in conjunction with other senior clinical colleagues in the teaching of clinical skills to other members of the dental team as appropriate.
- Undertake local mandatory training, continual professional development and clinical appraisal to maintain standards of clinical practice. This includes attendance at journal clubs, trainee study days and national conferences (following NHSE/Livewell Southwest study leave policy).

Budget Responsibilities

- This post is not a budget holding post; however, the post holder will be required to support the Business Managers and Clinical Lead in the efficient and effective use of resources.

Line Management Responsibilities

- The post holder will not have line management commitments.

GENERAL INFORMATION

This job description is intended as an outline indicator of general areas of activity and will be amended in the light of changing service needs. This job description is to be reviewed in conjunction with the post holder on an annual basis.

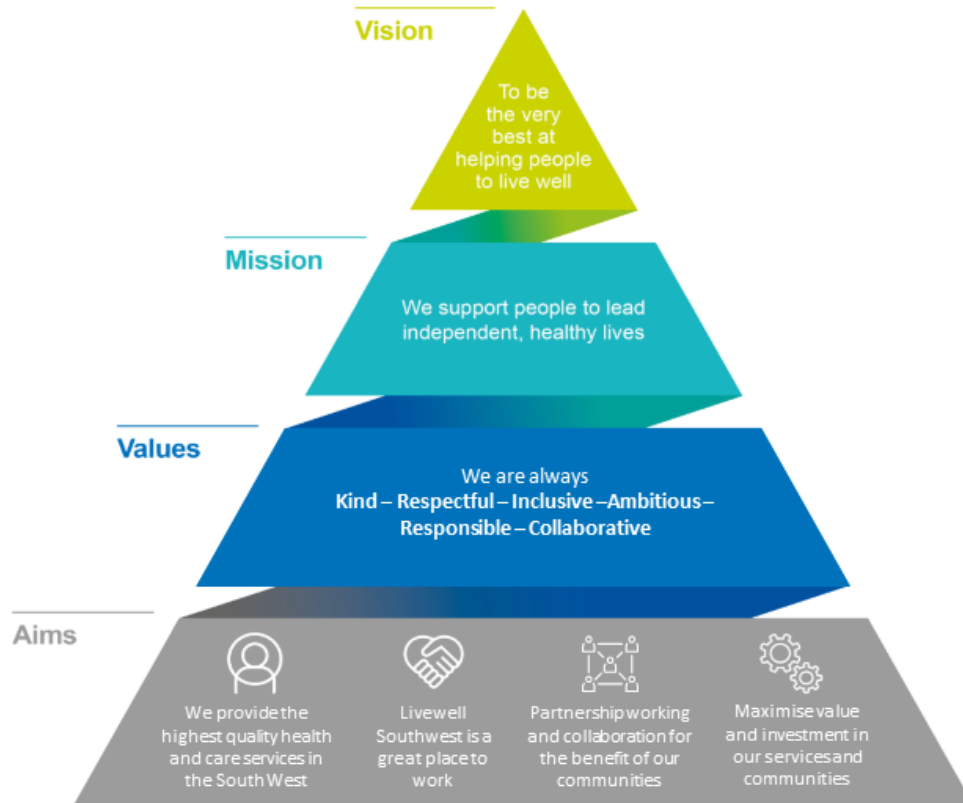
Clinic Locations

Greenbank Dental Clinic,
Plymouth Community Dental Services,
1a, Baring Street,
Greenbank,
Plymouth,
Devon PL4 8NF

Scott Dental Clinic,
Plymouth Community Dental Services,
Scott Business Park,
Beacon Park Road,
Plymouth,
Devon PL2 2PQ

Freedom Unit,
University Hospitals Plymouth NHS Trust (Derriford),
Derriford Road,
Plymouth,
Devon PL6 8DH

Livewell Southwest Values



Local Policies

The post-holder will be expected to work in accordance with local policies and guidelines at all times. Copies of all policies can be accessed via the staff intranet or external website, or via your manager.

Safeguarding

All employees have a duty for safeguarding and promoting the welfare and safety of children and adults at risk. The post holder must be fully aware of, and understand the duties and responsibilities arising from, the Children’s Act 2004 and Working Together.

Staff must be familiar with local Child Protection and Safeguarding Adult policies. The post holder should be able to recognise the types and signs of abuse and neglect and know how to raise concerns about the welfare of anyone with whom they have contact. The post holder must attend regular safeguarding training that is appropriate to their role.

Safety at work

Employees must be aware of the responsibilities placed on them under the Health & Safety at Work Act 1974. They must ensure that agreed safety procedures are carried out and maintain a safe environment for employees, patients and visitors.

Information security

The post-holder will be expected to adhere to local Information Security Policy at all times, and maintain appropriate confidentiality of information relating to personal information of staff and patients and commercially sensitive business.

Smoking

Livewell Southwest operates a 'non-smoking' policy and offers support to staff who wish to stop smoking. Employees are not permitted to smoke anywhere within Livewell Southwest or University Hospitals Plymouth NHS Trusts premises or when outside on official business.

Equal Opportunities

Livewell Southwest is committed to achieving equality of opportunity for all staff and service users. You must work in accordance with equal opportunity policies/procedures and promote the equality and diversity agenda.

Sustainability Clause

Livewell Southwest is committed to creating a sustainable business. Staff are expected to make positive steps to reducing, reusing and recycling wherever and whenever possible.

For **Person Specification** please see Entry Criteria ST1 Special Care Dentistry 2026 at [Special Care Dentistry ST1 person specification | Dental Hub](#)

SUPPLEMENTARY INFORMATION

Physical Effort	Yes	No	If yes – Specify details here - including duration and frequency
Working in uncomfortable / unpleasant physical conditions	Yes		Delivering clinical care in domiciliary settings.
Working in physically cramped conditions	Yes		Delivering clinical care in domiciliary settings.
Lifting weights, equipment or patients with mechanical aids	Yes		Assisting the movement of patients in theatre. Moving domiciliary dental equipment. Moving equipment including wheelchair tipper and knee-break chairs. Use of Sara Stedy stand assist.
Lifting or weights / equipment without mechanical aids	Yes		Carrying medical emergency kit on domiciliary visits.
Moving patients without mechanical aids		No	
Making repetitive movements	Yes		Operative dentistry and keyboard tasks.
Climbing or crawling		No	
Manipulating objects	Yes		Dental instruments and equipment.
Manual digging		No	
Running		No	
Standing / sitting with limited scope for movements for long periods of time	Yes		Working in dental surgeries and theatres can include sitting or standing for prolonged periods.
Kneeling, crouching, twisting, bending or stretching	Yes		For very short periods as a reasonable adjustment to deliver dental care whilst being aware of own posture, and risk assessing as appropriate.
Standing / walking for substantial periods of time		No	
Heavy duty cleaning		No	
Pushing / pulling trolleys or similar	Yes		Transportation and use of domiciliary dental equipment in the community. Portable radiography equipment in theatre.

Working at heights		No	
Restraint i.e. jobs requiring training / certification in physical interventions	Yes		Clinical holding and breakaway training provided
Mental Effort	Yes	No	If yes - Specify details here - including duration and frequency
Interruptions and the requirement to change from one task to another (give examples)	Yes		Frequent interruptions to schedules for example prioritisation of urgent care patients, requirement to cover sickness/annual leave in other areas of the service. Special Care Dentistry requires clinicians to be adaptable, making reasonable adjustments for patients, throughout the working day.
Carry out formal student / trainee assessments	Yes		May be required to support early years dental trainees. Sedation training and mentoring for both dentists and dental nurses.
Carry out clinical / social care interventions	Yes		Daily delivery of clinical dental care and following local Safeguarding pathways.
Analyse statistics	Yes		Audits, quality improvement projects and review of clinical cases for portfolio.
Operate equipment / machinery	Yes		Daily operation of dental equipment after appropriate training. Including dental radiography equipment and gas cylinders.
Give evidence in a court / tribunal / formal hearings	Yes		If required, for example, case conferences, Court of Protection reports etc.
Attend meetings (describe role)	Yes		Participate in local team meetings, regional Managed Clinical Network and other meetings as agreed in job plan and educational agreement.
Carry out screening tests / microscope work		No	
Prepare detailed reports	Yes		Reports are sometimes required regarding care given for example best interests meeting, court of protection.
Check documents	Yes		Daily.
Drive a vehicle	Yes		As required for clinical dental work in settings outside base.

Carry out calculations	Yes		Pharmacy calculations as required.
Carry out clinical diagnosis	Yes		Daily.
Carry out non-clinical fault finding		No	

Emotional Effort	Yes	No	If yes - Specify details here - including duration and frequency
Processing (eg: typing / transmitting) news of highly distressing events	Yes		As required, for example assessment of oncology patients, discussions around prognosis of teeth e.g., multiple extractions, trauma etc.
Giving unwelcome news to patients / clients / carers / staff	Yes		As above.
Caring for the terminally ill	Yes		Provision of dental care as appropriate. There will be patients on palliative pathways.
Dealing with difficult situations / circumstances	Yes		Patient group includes many patients with additional needs, including safeguarding referrals.
Designated to provide emotional support to front line staff	Yes		Emotional support for clinic colleagues, team working.
Communicating life changing events	Yes		As required for loss of natural teeth.
Dealing with people with challenging behaviour	Yes		Part of daily clinical work.
Arriving at the scene of a serious incident	Yes		Medical emergency may occur.

Working conditions – does this post involve working in any of the following:	Yes	No	If yes - Specify details here - including duration and frequency
Inclement weather		No	
Excessive temperatures	Yes		Surgeries all have air conditioning and central heating. Less controlled working spaces in domiciliary and hospital settings.
Unpleasant smells or odours	Yes		Patient group may have sub-optimal personal hygiene
Noxious fumes		No	
Excessive noise &/or vibration	Yes		Increased ventilation for use of nitrous oxide, stimulation and distraction for patients. Sometimes patients and the clinic can be a noisy environment.
Use of VDU more or less continuously		No	Significant VDU use but as part of predominantly clinical role.
Unpleasant substances / non household waste	Yes		Clinical materials.
Infectious Material / Foul linen	Yes		Clinical role.
Body fluids, faeces, vomit	Yes		Clinical role - most likely blood and saliva.
Dust / Dirt		No	
Humidity		No	
Contaminated equipment or work areas	Yes		In context of clinical role.
Driving / being driven in Normal situations	Yes		May be driver or passenger on a domiciliary visit.
Driving / being driven in Emergency situations		No	
Fleas or Lice	Yes		Possibly on some patient interactions.
Exposure to dangerous chemicals / substances in / not in containers	Yes		COSHH processes in place.

Exposure to Aggressive Verbal behaviour	Yes		Clinical role and also includes patients with additional needs.
Exposure to Aggressive Physical behaviour	Yes		Clinical role and also includes patients with additional needs.

SUGGESTED TIMETABLE FOR YEAR 1

DAY	VENUE	ACTIVITY	TRAINERS / SUPERVISORS
Monday	Greenbank Dental Clinic, Plymouth	Sedation clinic: inhalation sedation, intravenous +/- transmucosal sedation treatment of patients with complex additional needs in a community setting. Assessment clinic: patients with a wide range of special care dental needs in a community setting.	Specialists in Special Care Dentistry Sedation Lead
Tuesday 3 in 4 Study Day 1 in 4	Greenbank Dental Clinic, Plymouth On-site or from home	Treatment clinic: patients with a wide range of special care dental needs in a community setting. SCD assessment clinic	Specialists in Special Care Dentistry
Wednesday PM once a month PM every 3 months	Greenbank Dental Clinic, Plymouth STR Virtual Study Group StR Virtual Journal Club	SCD sedation clinic: Sedation of complex patients requiring dedicated seditionist. MS Teams MS Teams	Specialists in Special Care Dentistry Regional STR networks Oxford NHS Foundation Trust Library Services
Thursday	Greenbank Dental Clinic, Plymouth Possibly of linking to other specialities such as Oral Surgery or off-site placements	Assessment and treatment of patients with a wide range of special care dental needs in a community setting. Admin time	Specialists in Special Care Dentistry Other clinicians as required
Friday 3 in 4	On-site or from home	Study day	Self-guided

1 in 4	Derriford Hospital, Plymouth	Special Care Dentistry GA list	Specialist in Special Care Dentistry
--------	---------------------------------	--------------------------------	--------------------------------------------